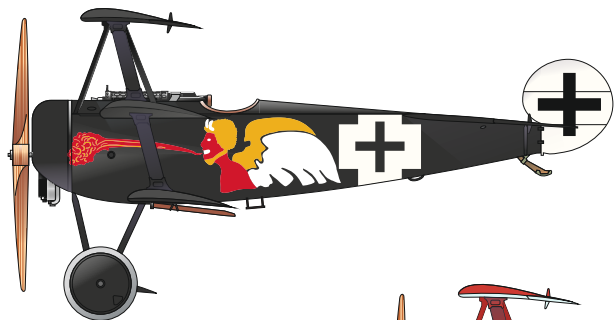


SCALE
1/24

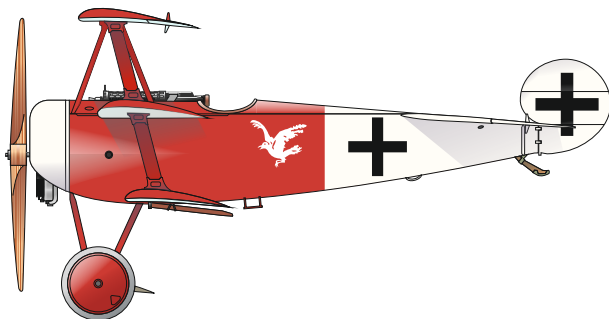
DIE ALTEN KANONEN

ITEM #
D24002

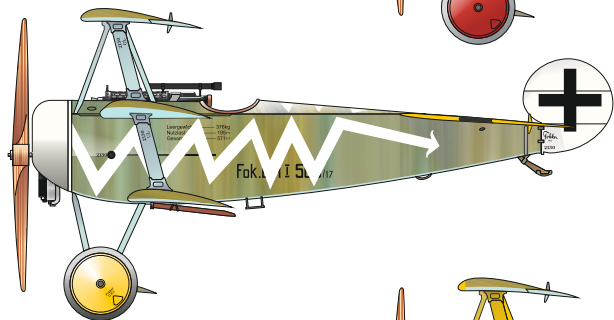


Fokker Dr.I, 450/17, Lt. Josef Jacobs, Jasta 7, Rumbeke, Belgium, March 1918

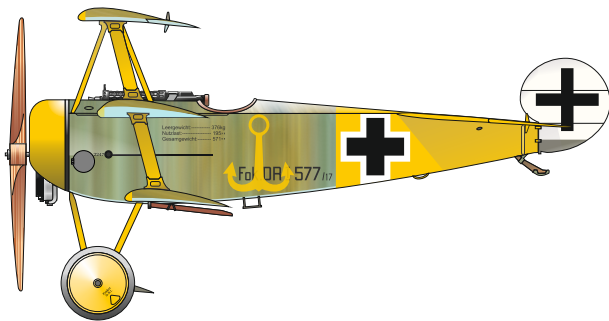
Fokker Dr.I, 479/17, Lt. August Raben, CO of Jasta 18, Montingen, France, October 1918



Fokker Dr.I, 503/17, Lt. Hans Körner, Jasta 19, Balatre, Belgium, April 1918



Fokker Dr.I, 557/17, Lt. Rudolf Klimke, Jasta 27, Halluin-Ost, France, May 1918



DESIGNED EXCLUSIVELY FOR FOKKER DR.I BY MENG

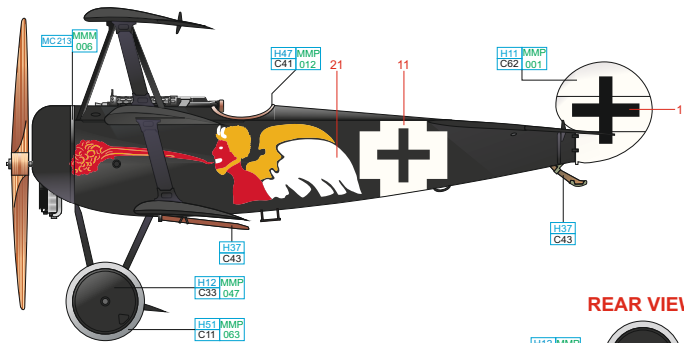
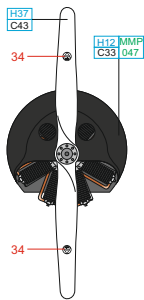


Eduard - Model Accessories, 435 21 Obrnice 170, Czech Republic

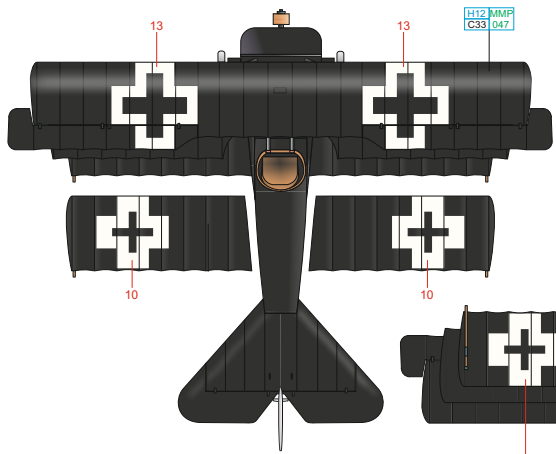
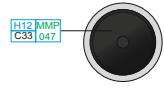
WWW.EDUARD.COM

D24002 Die alten Kanonen 1/24

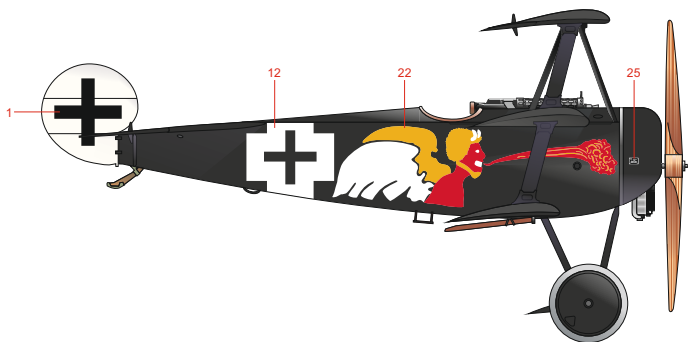
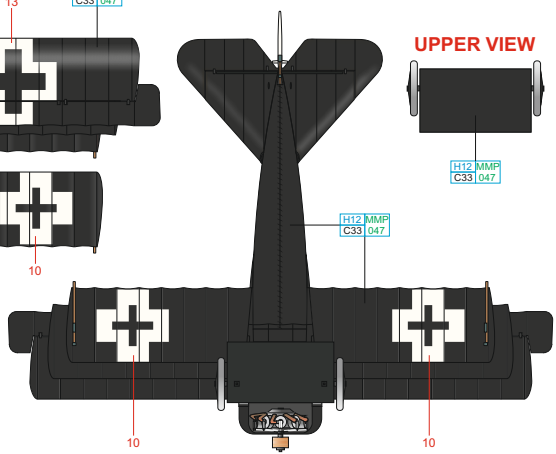




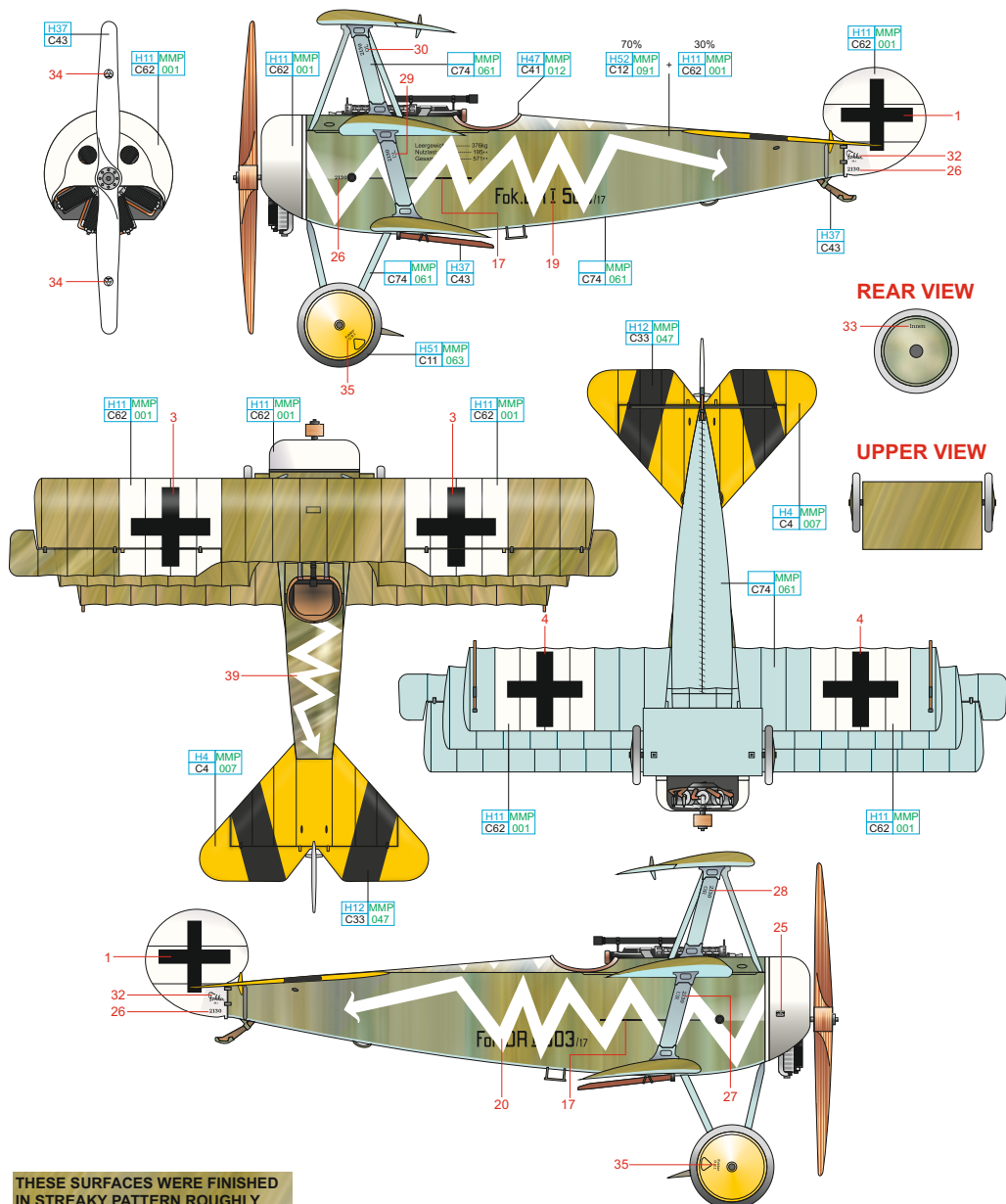
REAR VIEW



UPPER VIEW

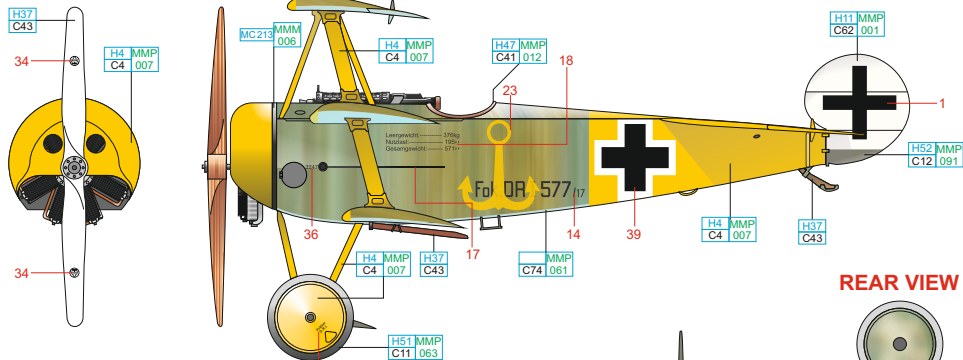


STEEL	MC213	MMM	006	WHITE	H11	MMP	C62	001	LIGHT GULL GRAY	H51	MMP	C11	063	RED BROWN	H47	MMP	C41	012	WOOD BROWN	H37	C43
FLAT BLACK	H12	MMP	C33	047																	

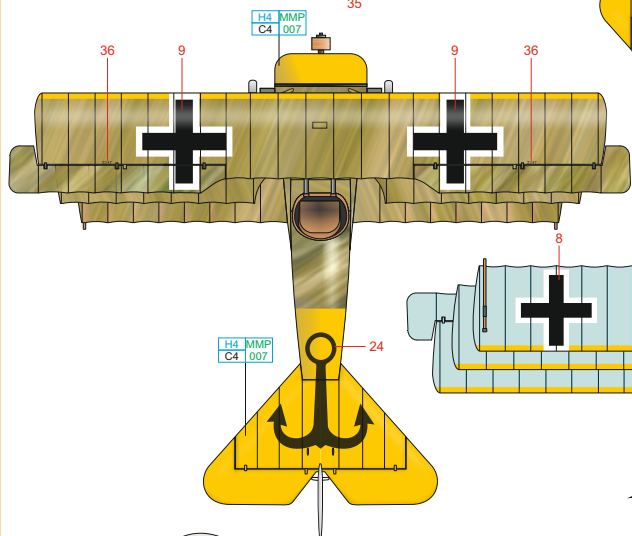


THESE SURFACES WERE FINISHED IN STREAKY PATTERN ROUGHLY BRUSHED OVER THE NATURAL LINEN COVER. FOUR MAIN PIGMENTS WERE USED: VERY DARK BROWN, VIOLET, LIGHTENED AZURE BLUE AND MEDIUM GREEN

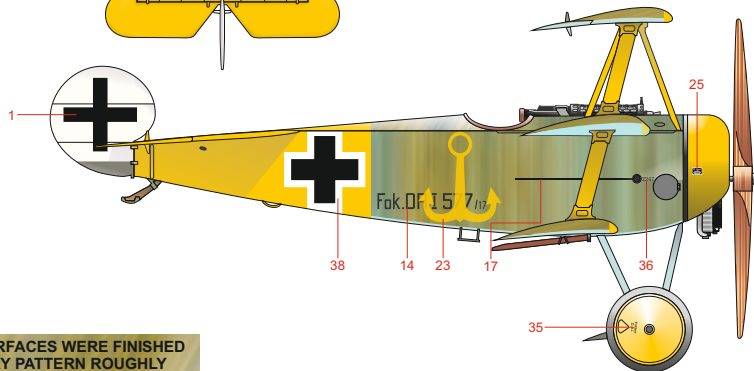
LIGHT BLUE	H11 MMP C62 001	YELLOW	H4 MMP C4 007	FLAT BLACK	H12 MMP C33 047	WOOD BROWN	H37 C43
WHITE	H11 MMP C62 001	LIGHT GULL GRAY	H51 MMP C11 063	RED BROWN	H47 MMP C41 012	OLIVE DRAB	H52 MMP C12 091



REAR VIEW



UPPER VIEW

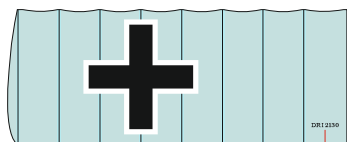


THESE SURFACES WERE FINISHED IN STREAKY PATTERN ROUGHLY BRUSHED OVER THE NATURAL LINEN COVER. FOUR MAIN PIGMENTS WERE USED: VERY DARK BROWN, VIOLET, LIGHTENED AZURE BLUE AND MEDIUM GREEN

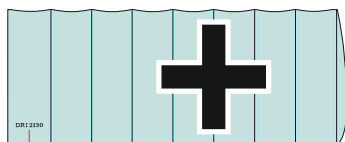
LIGHT BLUE	C74	MMP	061	YELLOW	H4	MMP	C4	007	OLIVE GREEN	H52	MMP	C12	091	STEEL	MC213	MMM	006
WHITE	H11	MMP	C62	001	LIGHT GULL GRAY	H51	MMP	C11	063	RED BROWN	H47	MMP	C41	012	WOOD BROWN	H37	C43

decal No.31 for Fokker Dr. I 503/17

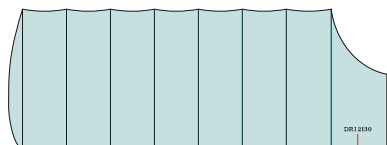
decal No.37 for Fokker Dr.I 577/17



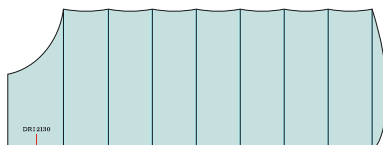
31?37



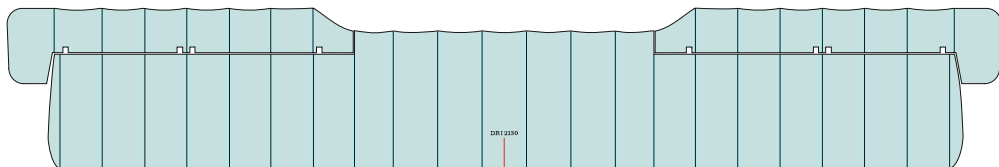
31?37



31?37



31?37



31?37